

ScanBright archeo

3D Scanner for Heritage Preservation

SMARTTECH 3D
Optical measurement systems

ScanBright archeo 3D scanner - is a complex solution providing professional digitalization of museum objects for various applications-starting with simple visualization for virtual museum creation up to precise archivization process.



New! Integrated with shadowless lighting system



Accuracy certificate

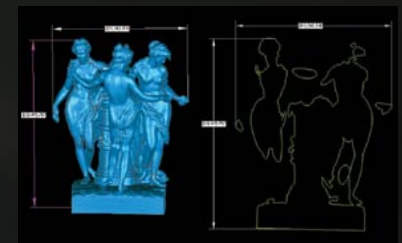
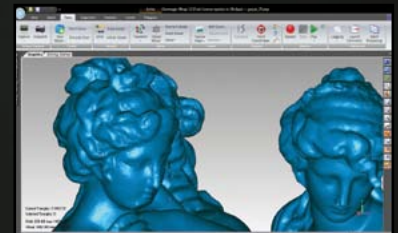
ScanBright archeo has been designed for professional digitalization of fragile and precious museum objects according to Recommendation for planning and conducting digitalization of museum objects. Thanks to wide cooperation with many museum institution, ScanBright archeo meets highest requirement of measurements and also provides realistic models for virtual museums and 3D printing.

Scan accuracy up to 30 μm and high point cloud density (to 650 points/ mm^2) provides precise geometry representation and enables 3D archivary or virtual research based on scanning. The use of high class detector with real color image and highest resolution (18 MPix) on the market gives you the possibility to visualize the smallest changes and appreciate the artist finesses in every detail.

SAFETY GUARANTEED - White light 3D scanning technology uses only white spectrum of light which guarantees user full safety of precious models.

EAS OF USE - Each 3D scanner is delivered and installed at the clients site and together with mobile workstation and software is instantly ready for use. To make sure your measurement is precise ScanBright archeo is calibrated on production site and checked according to VDI/VDE 2634. Professional transport cases and specialized ISA module (Internal Shock Absorber) integrated in scanner head casing ensure that no end user calibration is needed.

3D SCANNER DESIGNED FOR NATIONAL HERITAGE PRESERVATION - Over decade of experience in 3D scanner production and museum heritage measurement gave us opportunity to adjust scanning process for museology needs offer precise rotate table to automate measurement. As an additional features we advanced light markers for automatic scan merging (no need for physical markers) and specialized application for automated periodic measurement for damage assessment. We provide professional service, technical help and complex training in 3D scanning and data post processing.



Looking for international distributors

SCAN3D multimedia



Scan3D multimedia - scanner created for visualization and multimedia.

Scan3D multimedia enables generating realistic colored of complex objects in short time. ULTRA-FAST scanning deals with scanning biological objects like face or plant.

Scan3D multimedia scanners are equipped with hand on software which make work easy even for beginner. Auto measure and post processing functions together with rotating table can ensure complete visualization almost without operators integration.

Scanning results can be exported to main graphic software (Autodesk 3DMax, Blender, Maya, etc.).

ScanBright edu



3D scanners for educational goals - The best offer for education!

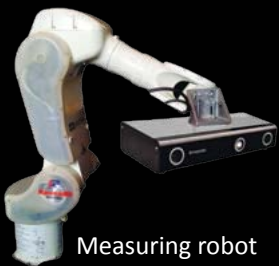
Complex equipment for modern RE and VR laboratories:

- 3D scanners,
- Reverse Engineering software,
- 3D printers,
- Computers and accessories.

System was deployed at more than 30 universities and technical schools. Closed and hard scanner cover with Interior Shock Absorber system (ISA), provides long and safe scanner use. Advance technology allows surface and texture measuring in the same time.

For education purposes 3D scanners can be calibrated in various modes enabling precise measurement for technical objects and ultra-fast measurement of biological objects with the same device.

Additional accessories:



Technical details	ScanBright archeo	ScanBright edu	SCAN3D multimedia
Technology	Structural White Light	Structural White Light	Structural White Light
Detector resolution [points]	18; 10 Mpix	5; 3; 2 Mpix	10; 5; 2 Mpix
Scanning field [mm ²]	150x200 - 1200x1600	150x200 - 1200x1600	150x200 - 1200x1600
Distance between points[mm]	0,04 - 0,40	0,08 - 0,50	0,04 - 0,70
Sampling rate [points/mm ²]	9 - 650	1 - 160	1 - 600
Number of points from scan [points]	10 - 18 millions	2 - 5 millions	2 - 10 millions
Tripod	+	option	+
Texture measure	+	option	+
Mobile work station	+	option	option

Local distributor:



OEM available